








MAP LABEL	AIDS TO NAVIGATION	PLANE COORDINATES		LATITUDE	LONGITUDE
		X	Y		
G27#	LT BUOY 27 (0924)	503,240	22,024,51	30°28'29.50"	81°28'38.54"
FRT RGE LT	FRONT RANGE LT (0924)	505,922	22,024,837	30°28'43.81"	81°28'42.43"
RTR RGE LT	FRONT RANGE LT (0924)	505,692	22,024,833	30°28'43.59"	81°28'38.55"



US Army Corps of Engineers  
Jacksonville District

SAFETY ON THIS JOB  
DEPENDS ON YOU

DEPARTMENT OF THE ARMY  
JACKSONVILLE DISTRICT, CORPS OF ENGINEERS  
JACKSONVILLE, FLORIDA

Checked By:	GHK
Designed By:	WRM
Drawn By:	WRM
File No.:	2197A-HARBOR
Date:	AUG 2021

JACKSONVILLE HARBOR, FLORIDA

**3rd QUARTER EXAM SURVEY FY21**  
**30, 34, 38, 40 & 42-FOOT PROJECT**

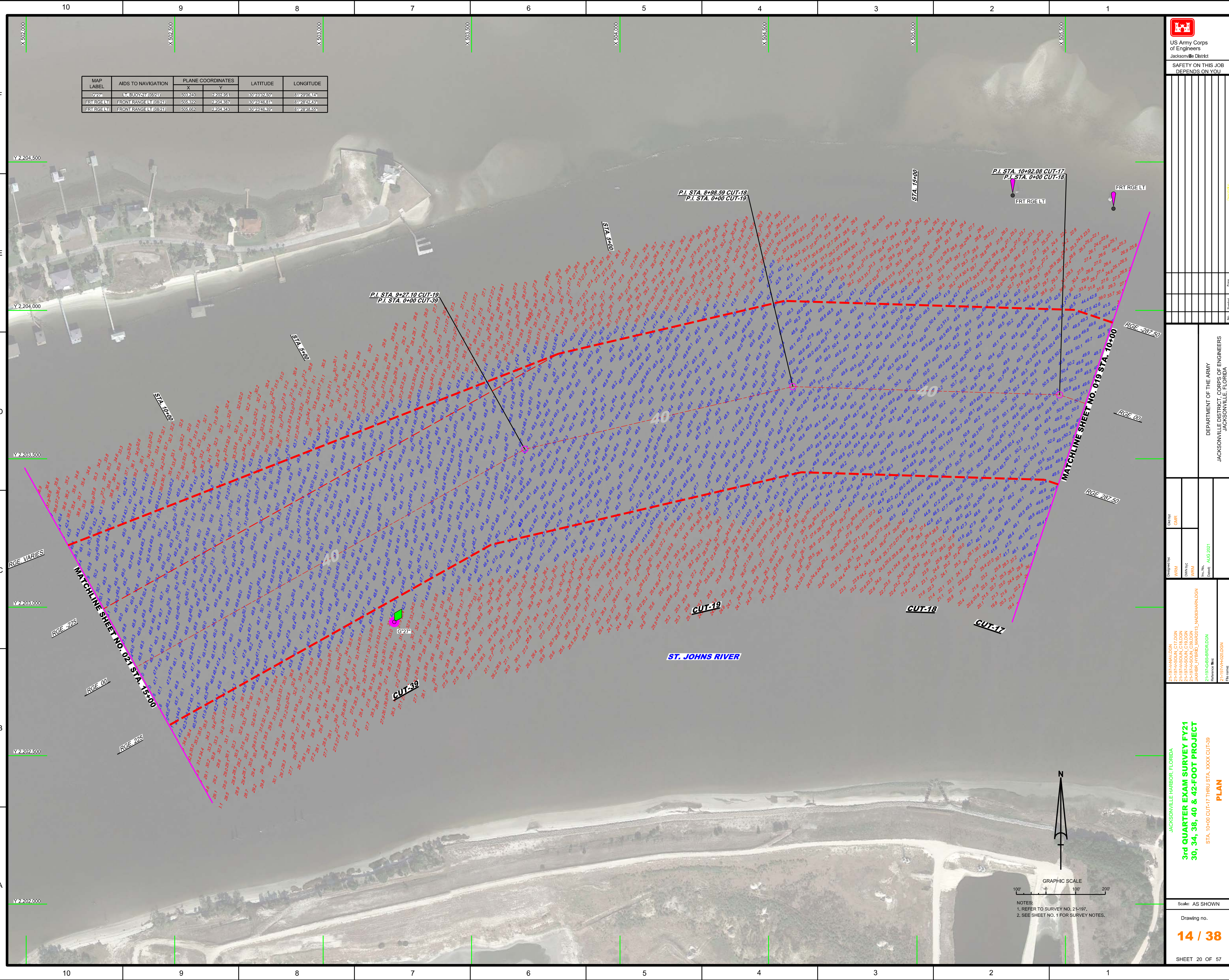
STA. 10+00 CUT-17 THRU STA. XXXX CUT-39

**PLAN**

Scale: AS SHOWN

Drawing no. **14 / 38**

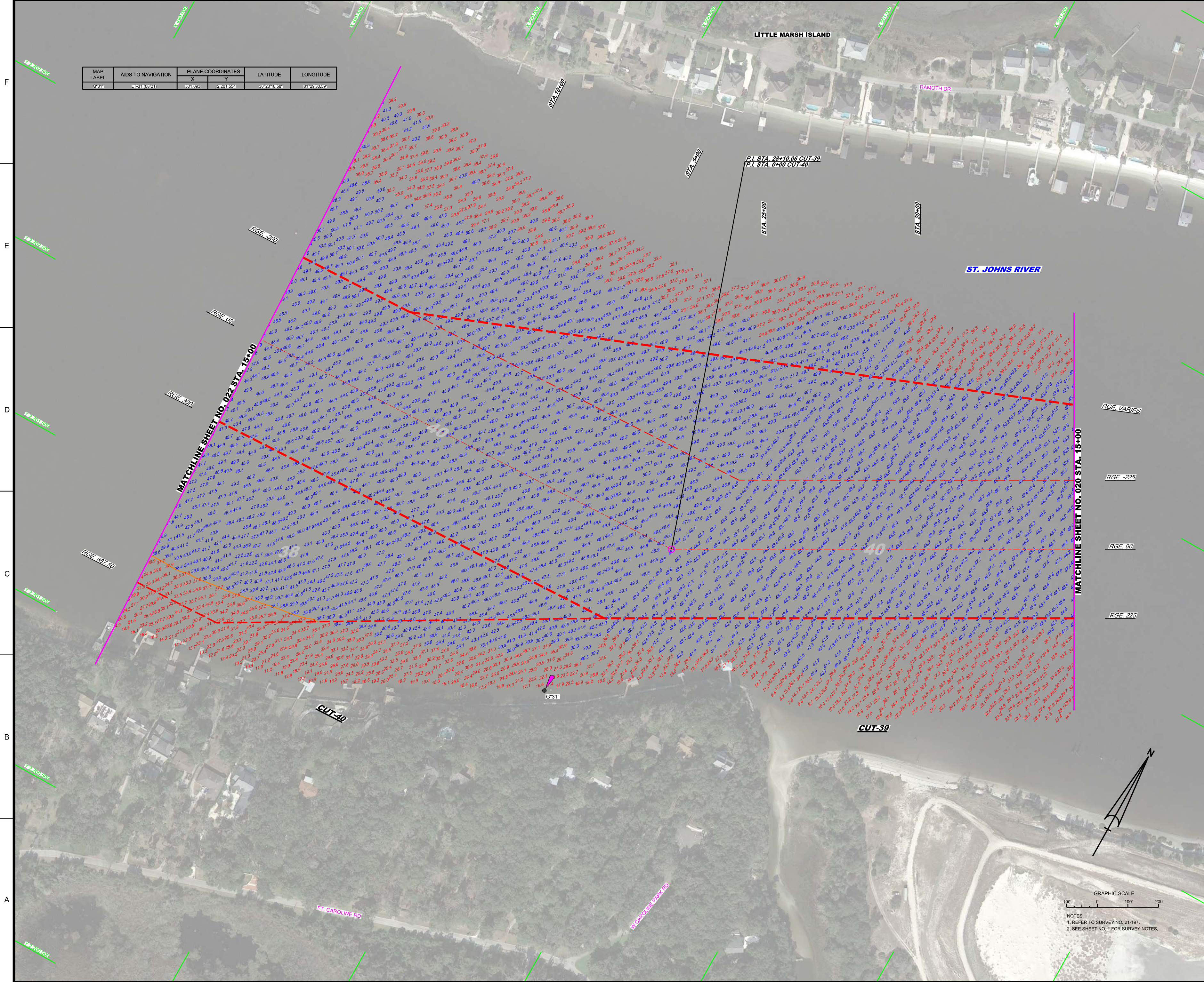
SHEET 20 OF 57



NOTES:  
1. REFER TO SURVEY NO. 21-197.  
2. SEE SHEET NO. 1 FOR SURVEY NOTES.

**US Army Corps of Engineers**  
Jacksonville District  
SAFETY ON THIS JOB  
DEPENDS ON YOU

MAP LABEL	AIDS TO NAVIGATION	PLANE COORDINATES		LATITUDE	LONGITUDE
		X	Y		
G31*	LT-311 (0821)	501.093	4201.554	30°28'18.58"	81°29'20.59"



DEPARTMENT OF THE ARMY  
JACKSONVILLE DISTRICT, CORPS OF ENGINEERS  
JACKSONVILLE, FLORIDA

Checked By:	GHR
Designed By:	WRM
Drawn By:	WRM
File No.:	2-1974-GB-BRIGLDCN
Drawn Date:	AUG 2021

JACKSONVILLE HARBOR, FLORIDA  
**3rd QUARTER EXAM SURVEY FY21**  
**30, 34, 38, 40 & 42-FOOT PROJECT**  
STA. 15+00 CUT-39 THRU STA. 15+00 CUT-40  
**PLAN**

Scale: AS SHOWN  
Drawing no. **15 / 38**  
SHEET 21 OF 57



NOTES:  
1. REFER TO SURVEY NO. 21-197.  
2. SEE SHEET NO. 1 FOR SURVEY NOTES.











